

## Nimbus Series



## Nimbus NG

### Features

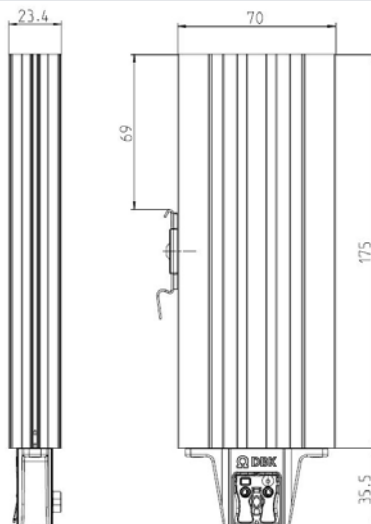
- Lightweight and compact
- High power density
- Optional finger guard
- Anodized aluminum extrusion
- Highly effective with low material usage

DBK's knowledge of thermal management gives us the experience to guide and support you with your technical challenges - we can manage the complete project from concept to full production release.



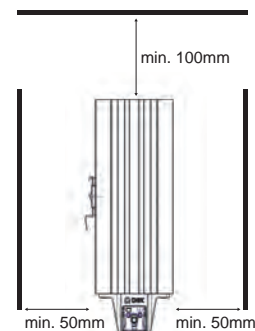
| Nimbus NG                  |            | 100                              | 125 | 150 | 170  | 240  |
|----------------------------|------------|----------------------------------|-----|-----|------|------|
| Power output at 10° C      | [W]        | 100                              | 125 | 150 | 175  | 240  |
| Power output at -25° C     | [W]        | 125                              | 140 | 175 | 190  | 260  |
| Voltage range              | [V]        | 100 - 240 AC/DC                  |     |     |      |      |
| Inrush current at 115V     | [A]        | 2,5                              | 3,0 | 4,0 | 7,0  | 6,5  |
| Inrush current at 230V     | [A]        | 5,5                              | 5,5 | 8,0 | 13,5 | 14,0 |
| Protection class           |            | II                               |     |     |      |      |
| Degree of protection       |            | IP20                             |     |     |      |      |
| Connection                 |            | Thermal block                    |     |     |      |      |
| Fastening                  |            | Clip for 35mm DIN rail EN 50 022 |     |     |      |      |
| Dimensions                 | LxWxH [mm] | 210.5x70x23.4                    |     |     |      |      |
| Weight total               | [kg]       | approx. 0.33                     |     |     |      |      |
| Touch protection available |            | Yes                              |     |     |      |      |
| Recommended fuse           | 115V [A]   | 4,0                              | 4,0 | 4,0 | 6,0  | 6,0  |
| (time-delay)               | 230V [A]   | 6,0                              | 6,0 | 8,0 | 10,0 | 10,0 |

### Design Drawing



### Installation instructions:

The heater must only be mounted into a housing with inner dimensions of min. 600x300x200mm.



### Matching Accessories:



- Thermostats (FGT100, FGT200)
- Dualstat (FGDT Series)

### Nimbus B



#### Features

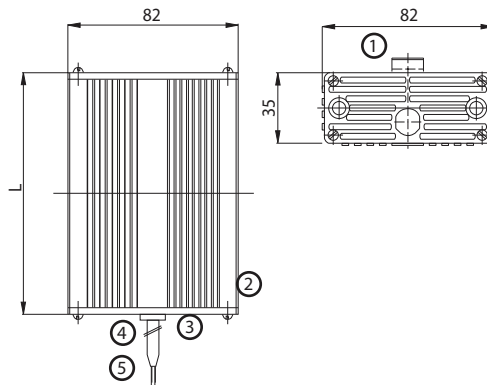
- Thermal separation of the PTC heater from the external profile (patented)
- Limited external profile temperature
- Optimal convection

DBK's knowledge of thermal management gives us the experience to guide and support you with your technical challenges - we can manage the complete project from concept to full production release.

| Nimbus B  |            | 90                           |      | 120       |      | 150       |      | 200       |      |
|---|------------|------------------------------|------|-----------|------|-----------|------|-----------|------|
| Rated power at 10° C                                | [W]        | 30                           | 50   | 40        | 60   | 50        | 75   | 80        | 100  |
| External profile temp. (approx.)                    | [°C]       | 70                           | 90   | 80        | 90   | 80        | 100  | 80        | 100  |
| Voltage range                                       |            | 110 - 240 V, AC/DC           |      |           |      |           |      |           |      |
| Protection class                                    |            | II                           |      |           |      |           |      |           |      |
| Degree of protection                                |            | IP20                         |      |           |      |           |      |           |      |
| Connection cable 2 x 0,5 mm <sup>2</sup> , silicone |            | 500 mm long                  |      |           |      |           |      |           |      |
| Fixing  |            | DIN Clip for 35 mm rail EN50 |      |           |      |           |      |           |      |
| Approvals   |            | 022 VDE, UL, CE              |      |           |      |           |      |           |      |
| Dimensions  | LxWxH [mm] | 90x82x35                     |      | 120x82x35 |      | 150x82x35 |      | 200x82x35 |      |
| Weight  | [kg]       | 0,29                         |      | 0,38      |      | 0,48      |      | 0,64      |      |
| Recommended fuse (time-delay)                       | 240 V      | 4 A                          | 6,3A | 4 A       | 6,3A | 4 A       | 6,3A | 6,3A      | 6,3A |
|   | 110 V      | 2 A                          | 4 A  | 2 A       | 4 A  | 2 A       | 4 A  | 4 A       | 6,3A |

**Ordering Example:** Nimbus B 120, 40 W, 110-240 V. Special design 12 - 24 V.

#### Design Drawing



- ① Fixing clip for 35 mm DIN top hat rail EN50 022
- ② Aluminum profile
- ③ Cover plate
- ④ Strain relief
- ⑤ Silicone cable 2 x 0,5 mm<sup>2</sup> (AWG 20)



#### Matching Accessories:

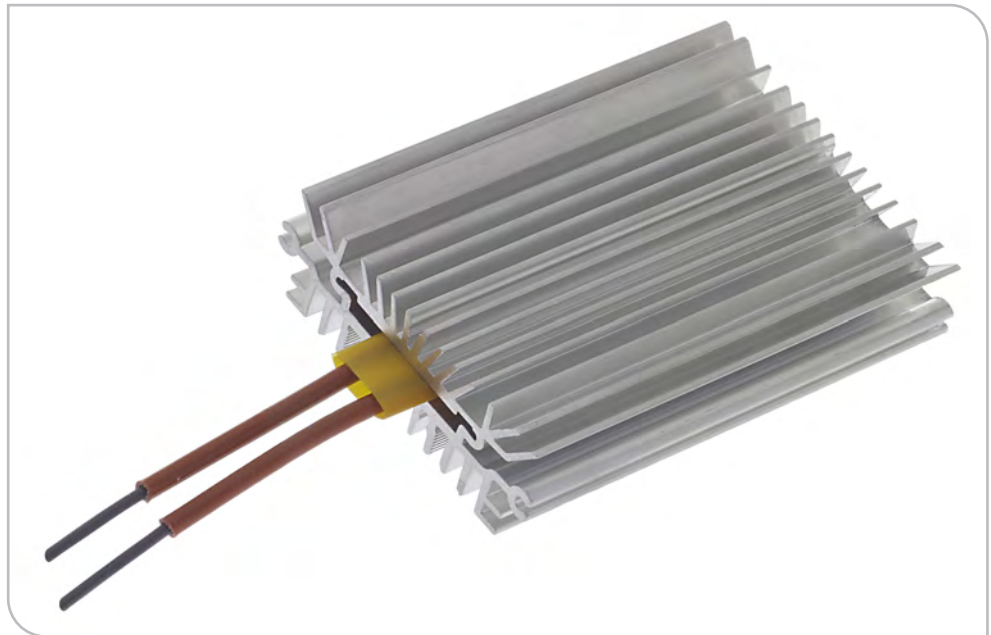
- Thermostats (FGT100, FGT200)
- Dualstat (FGDT Series)

## Convection Heater HP 13/28

### Features

- Rugged aluminium extrusion profile
- Compact design with high power density
- Safety by temperature limitation
- Fixing clip can be mounted either at the wide side or at the narrow side. (See position 1 on the drawing below)

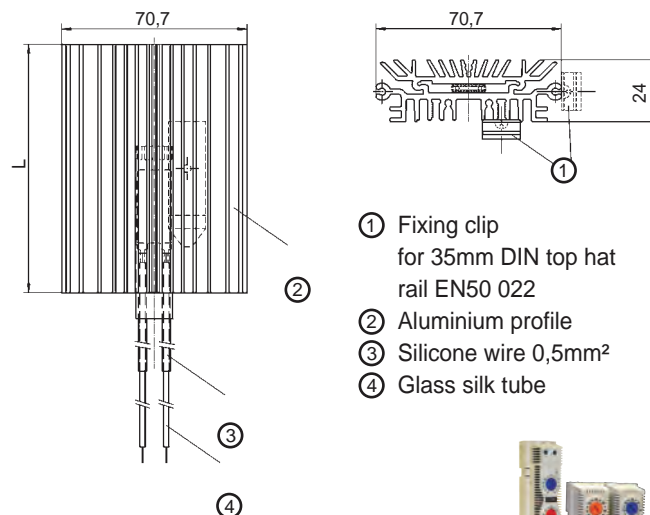
DBK's knowledge of thermal management gives us the experience to guide and support you with your technical challenges - we can manage the complete project from concept to full production release.



| Surface Heater HP                     | 13                              | 28         | 28          | 28          |
|---------------------------------------|---------------------------------|------------|-------------|-------------|
| Rated power at 10°C [W]               | 30                              | 50         | 75          | 100         |
| External profile temp. (approx.) [°C] | 130                             | 205        | 190         | 200         |
| Voltage range                         | 110 - 240 V, A C / D C          |            |             |             |
| Protection class                      | II                              |            |             |             |
| Degree of protection                  | IP 20                           |            |             |             |
| Connection wires 2 x 0,5mm², silicone | 500mm                           |            |             |             |
| Fixing                                | DIN Clip for 35mm rail EN50 022 |            |             |             |
| Approvals                             | VDE, UL, CE                     |            |             |             |
| Dimensions L x W x H [mm]             | 65x70,7x24                      | 65x70,7x24 | 125x70,7x24 | 175x70,7x24 |
| Weight [kg]                           | 0,13                            | 0,14       | 0,24        | 0,34        |
| Recommended fuse (time-delay)         | 240V                            | 4A         | 6,3A        | 6,3A        |
|                                       | 110V                            | 2A         | 4A          | 6,3A        |

**Ordering Example: HP-13 30W 110-240V**

### Design Drawing



#### Matching Accessories:

- Thermostats (FGT100, FGT200)
- Dualstat (FGDT Series)



**DBK Group**  
Industrial Thermal Management

**Further Information:**  
[www.itm.dbk-group.com](http://www.itm.dbk-group.com)

## Nimbus E



### Features

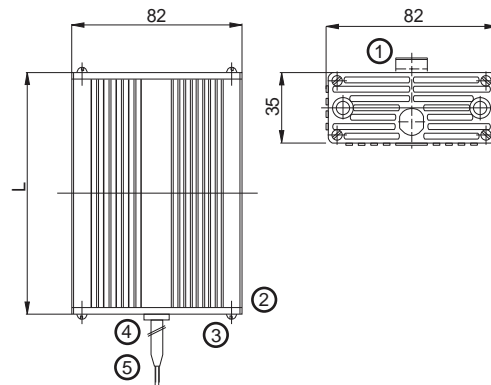
- Optimum convection
- High power density

DBK's knowledge of thermal management gives us the experience to guide and support you with your technical challenges - we can manage the complete project from concept to full production release.

| Nimbus E  |            | 90                               | 120       | 150       | 200       |
|---|------------|----------------------------------|-----------|-----------|-----------|
| Rated power at 10° C                                | [W]        | 80                               | 100       | 120       | 150       |
| External profile temp. (approx.)                    | [°C]       | 120                              | 130       | 130       | 130       |
| Voltage range                                       |            | 110 - 240 V, AC/DC               |           |           |           |
| Protection class                                    |            | II                               |           |           |           |
| Degree of protection                                |            | IP 20                            |           |           |           |
| Connection cable 2 x 0,5 mm <sup>2</sup> , silicone |            | 500 mm long                      |           |           |           |
| Fixing  |            | DIN clip for 35 mm rail EN50 022 |           |           |           |
| Approvals   |            | VDE, UL, CE                      |           |           |           |
| Dimensions  | LxWxH [mm] | 90x82x35                         | 120x82x35 | 150x82x35 | 200x82x35 |
| Weight  | [kg]       | 0.3                              | 0.4       | 0.49      | 0.65      |
| Recommended fuse (time-delay)                       | 240 V      | 6,3A                             | 6,3A      | 6,3A      | 6,3A      |
|   | 110 V      | 4A                               | 4A        | 4A        | 6,3A      |

Ordering Example: Nimbus E 90, 80 W, 110-240 V. Special design 12 - 24 V.

### Design Drawing



- ① Fixing clip for 35mm DIN top hat rail EN50 022
- ② Cover plate
- ③ Cover plate
- ④ Strain relief
- ⑤ Silicone cable 2 x 0,5 mm<sup>2</sup> (AWG 20)



#### Matching Accessories:

- Thermostats (FGT100, FGT200)
- Dualstat (FGDT Series)

### HP13 with long extrusion profile



#### Features

- Flat design
- Large contact surface
- Maximum heat output is reached by screwing the element directly onto a mounting plate

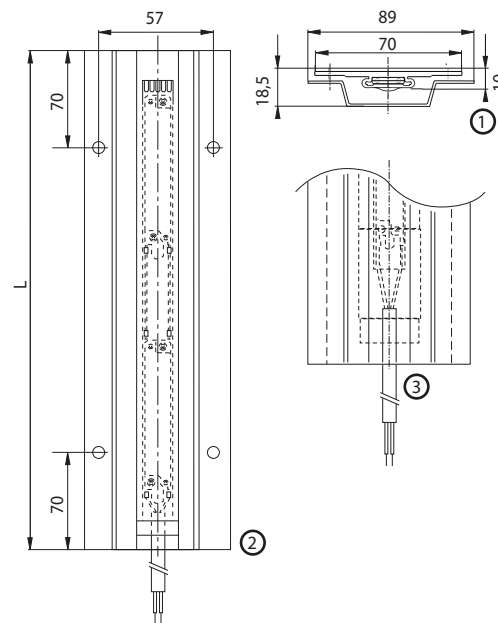
DBK's knowledge of thermal management gives us the experience to guide and support you with your technical challenges - we can manage the complete project from concept to full production release.

| HP13 4/22  |                | 250                | 340           | 400           |
|--|----------------|--------------------|---------------|---------------|
| Rated power at 10° C (free in air)                   | [W]            | 70                 | 95            | 110           |
| Profile temperature (approx.)                        | [°C]           | 200                | 200           | 200           |
| Max. achievable power with good thermal contact      | [W]            | 250                | 280           | 300           |
| Voltage range  |                | 110 - 240 V, AC/DC |               |               |
| Protection class                                     |                | II                 |               |               |
| Degree of protection                                 |                | IP 20              |               |               |
| Connection cable 2 x 0,75 mm <sup>2</sup> , silicone |                | 500 mm long        |               |               |
| Fixing   |                | Fixing holes       |               |               |
| Approvals  |                | VDE, UL, CE        |               |               |
| Dimensions   | L x W x H [mm] | 250 x 70 x 18      | 340 x 70 x 18 | 400 x 70 x 18 |
| Weight   | [kg]           | 0,2                | 0,31          | 0,38          |
| Recommended fuse (time delay)                        | 240 V<br>110 V | 10A<br>6,3A        | 10A<br>6,3A   | 10A<br>6,3A   |

#### Ordering Example: HP13 4/22 - 250 - 100-240V

Special versions available on request. For example 12 - 24V or 400V  
Touch protection optional.

#### Design Drawing



- ① Cross section with optional touch protection\*
- ② Aluminium extrusion without touch protection
- ③ Silicone cable 2 x 0,75 mm

\*Touch protection mounted to the heater with a min. clearance of 5mm to reduce surface temperature